



BH102 / 30"



BH103 / 12" 15" 18" 24"



BH105 / 18"



BH104 / 12" 15" 18" 24"

CHAMUNDAMATAJI



Ch101 / 36"



Ch102 / 12"



Ch103 / 12"-15"-18"-24"



Ch104 / 12"

GAYATRIMATAJI



G181 / 12" - 15" - 14" - 34" - 36"



GY102 / 15"



GY103 / 15"



GY104 / 15"



GY106 / 12"



GY105 / 10"



GY107 / 12"

MELDIMATAJI



DI101 / 12" - 15" - 18" - 24" - 36" (MELDI MATAJI)

DASHA MATAJI - OSIYA MATAJI - MOMAIMATAJI



DN102 / 12"15"18"24"36" (DASHA MATAJI - OSIYA MATAJI - MOMAIMATAJI)

LIMBACHMATAJI



DN183 / 12" - 15" - 18" - 24" - 36" 8 LIMBACH MATAJI



DV104 / 12"-15"-18"-24"-36" (BHAIJAL MATAJI)



DV114 / 10" (KALKADEVI)



DV115 / 11" (VRAJESHWARIDEVI)



DV116 / 10" (RENUKADEVI)



DV106 / 12"-15"-18"-24"-36" (SANTOSHI MATAJI)

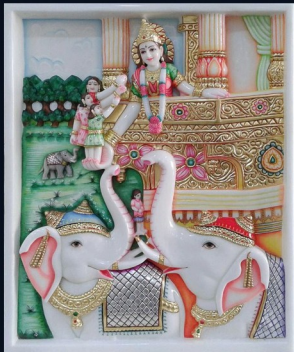


DV105 / 12"-15"-18"-24"-36" (AHAWATI MATAJI)



DV107 / 12"-15"-18"-24"-36" (BRAHMANI MATAJI)

ANNAPURNAMATAJI



DV108 / 24" 36" ANNAPURNA MATAJI

MAHAKALIMATAJI



DVI09 / 42"



DVI10 / 12"



DVI11 / 12"-15"-18"-24"-36"



DVI12 / 12"

VARAHIMATAJI



DN113 / 307 (VARAHIMATAJI)

DUTTATREYAJI



DT101 / 12"-15"-18"-24"-36"



DT102 / 12"-15"-18"-24"-36"



DT103 / 12"-15"-18"-24"-36"

SHANKARACHARYAJI



SHANKARACHARYAJI / 12"-15"-18"-24"-36"

GURUNANAKJI



GURUNANAKJI 001 / 12"-15"-18"-24"-36"

VISHWAKARMAJI



VISHWAKARMAJI 001 / 12"-15"-18"-24"-36"

JULELALJI



JULELALJI 001 / 12"-15"-18"-24"-36"

RAMDEVPIRJI



RAMDEVPIRJI 101 / 12" 15" 18" 24" 36"



RAMDEVPIRJI 102 / 12" 15" 18" 24" 36"



RAMDEVPIRJI 103 / 12" 15" 18" 24" 36"



BHATHARI / 12" 15" 18" 24" 36"

SAIBABAJI



SAIBABA 101 / 12"-15"-18"-24"-30"-48"



SAIBABA 103 / 12"-15"-18"-24"-30"-48"



SAIBABA 102 / 12"-15"-18"-24"-30"



SAIBABA 104 / 12"-15"-18"-24"-30"

JALARAMBAPA



JALARAM BAPA 101 / 12"-15"-18"-24"



JALARAM BAPA 102 / 30"



JALARAM BAPA 103 / 12"-15"-18"-24"

SWAMINARAYAN BHAGVAN



SW114 / 24"



SW115 / 24"



SW101 / 36"



SW103 / 12"-15"-18"
[BHAGATA MAHARAJ]



SW103 / 12"-15"-18"
[SHAGHTRE MAHARAJ]



SW105 / 12"-15"-18"-24"-36"



SW104 / 12"-15"-18"
[YOGESH MAHARAJ]



SW106 / 12"-15"-18"
[PRAMUKH-GANESH MAHARAJ]



SW107 / 18"



SW108 / 18"



SW111 / 18"-21"



SW109 / 18"



SW110 / 18"



SW112 / 28"



SW113 / 15" 18" 24" 30"

PARSHWANATHJI



JN101 / 51"



JN105 / 7"-9"-11"-15"-21"-25"-35"



JN102 / 25"



JN104 / 7"-9"-11"-15"-21"-25"-35"



JN106 / 7"-9"-11"-15"-21"-25"-35"



JN103 / 21"



JN107 / 7"-9"-11"-15"-21"-25"-35"